

Burundi Impact, Mid-Year 2012

Mid-year 2012, PSI has averted an estimated 6,632 DALYs in Burundi. This is 4% of their own program target for 2012.

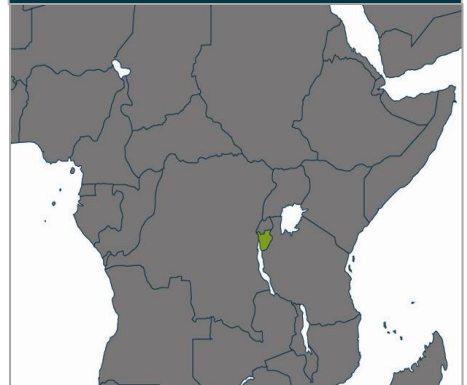
BURUNDI PROGRAM PERFORMANCE

	2012 YTD	% Change from 2011 YTD	% 2012 Program Target	2012 Program Target
SCALE				
■ DALYs Averted	6,632	-99%	4%	168,065
■ Couple Years of Protection (CYP)*	8,150	-61%	36%	22,500
■ Burden Averted	0.14%			
RELEVANCE				
		VALUE		
■ Health Relevance	23%	■ 2011 Net Cost per DALY	\$17	
■ Family Planning Method Mix**	1 with 0 LTM	■ 2011 Net Cost per CYP	\$38	

* CYPs based on new USAID conversion factors, except IUDs
 ** Target is 4 or more FP modern methods with at least one long-term method

BURUNDI

Map



BURUNDI HEALTH AREA PERFORMANCE

Current PSI Product & Service Health Areas	2012 YTD			% of Country Total Burden
	DALYs Averted	% Change from 2011 YTD	Burden Averted	
HIV & STD	4,272	-60%	1.2%	7.9%
Reproductive Health	2,360	-61%	0.33%	15.5%
Potential 41% increase in relevance with expansion of existing PSI products and services				% of Country Total Burden
Tuberculosis				3.0%
Malaria				6.4%
Diarrheal Diseases				11.9%
Nutritional Deficiencies				3.5%
Respiratory Infections				16.1%

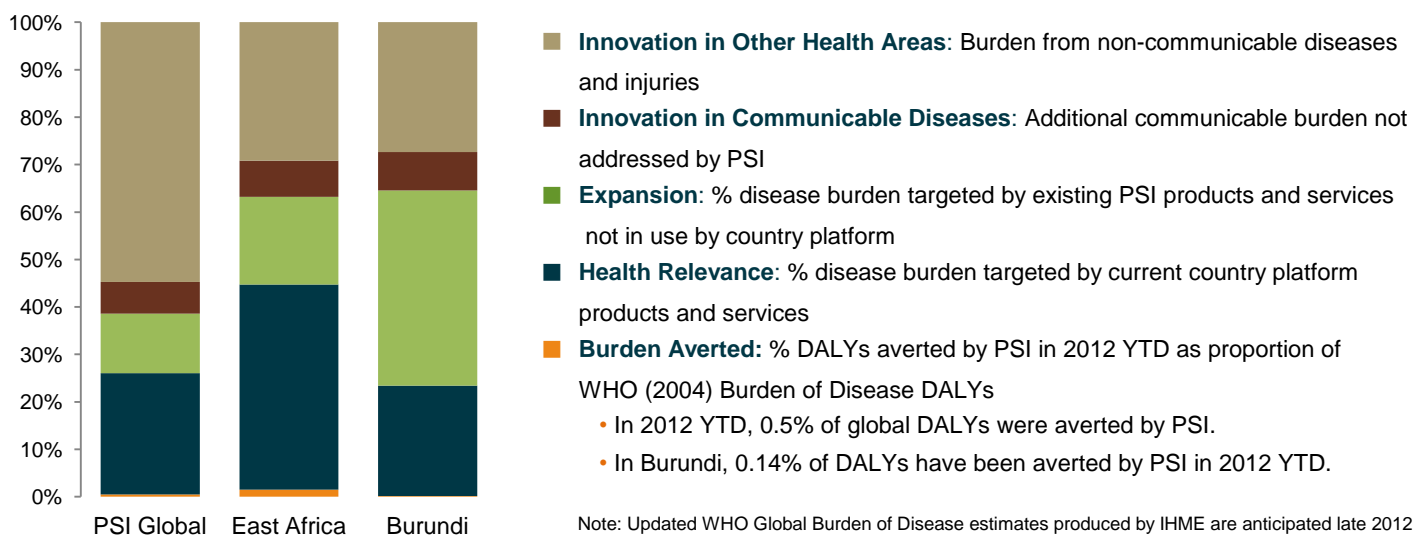
BURUNDI

Platform Profile

Population	8,382,849
Population under 5	1,184,632
Women aged 15-49	2,201,864
# Platform interventions	3
# Family planning interventions	1 with 0 LTM
Contraceptive prevalence	7.5% (2006)

* Population data from UN Population Division, 2010 revision

PSI RELEVANCE: 2012 DALYS AVERTED YTD COMPARED TO BURDEN OF DISEASE (WHO 2004)*



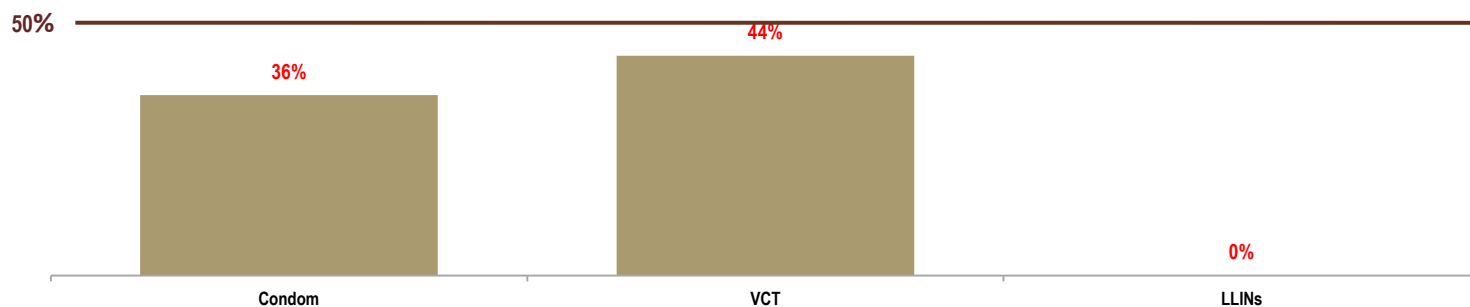
BURUNDI PRODUCTS & SERVICES DALYS AVERTED (from highest to lowest DALYs averted)

Products	2012 YTD DALYs	% Change from 2011 YTD	2012 YTD # Distributed	2012 Targeted Distribution	% of 2012 Target	2011 unit COGS	2012 YTD CYPs
Condom	6,534	-22%	978,030	2,700,000	36%	\$0.03	8,150
VCT	98	55%	4,195	9,509	44%	\$0.95	
LLINs	0	-100%	-	530,000	0%	\$3.98	
Total	6,632	-99%					8,150

* Product was not distributed in 2011 YTD

** DALYs averted and CYPs provided may be negative for products distributed in cases where PSI has distributed and inserted the same product. This is because DALYs averted and CYPs are calculated separately for products that are distributed and inserted; to avoid double counting, insertion DALYs and CYPs are subtracted from distribution.

PROGRESS TOWARD BURUNDI 2012 PROGRAM DISTRIBUTION TARGETS (% of 2012 Target)



* Targets are set by # of products distributed.