

Ethiopia Impact, Mid-Year 2012

Mid-year 2012, PSI has averted an estimated 28,127 DALYs in Ethiopia. This is 21% of their own program target for 2012.

ETHIOPIA PROGRAM PERFORMANCE

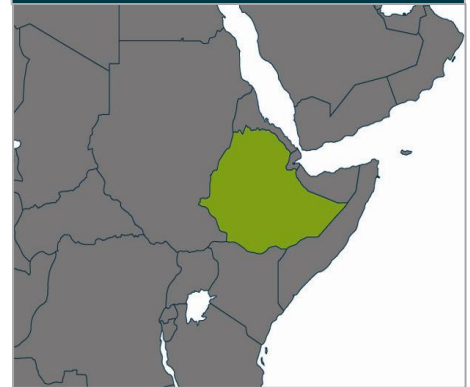
	2012 YTD	% Change from 2011 YTD	% 2012 Program Target	2012 Program Target
SCALE				
■ DALYs Averted	28,127	-38%	21%	133,830
■ Couple Years of Protection (CYP)*	14,923	19%	9%	166,667
■ Burden Averted	0.08%			
RELEVANCE				
■ Health Relevance	40%	■ 2011 Net Cost per DALY		\$56
■ Family Planning Method Mix**	1 with 0 LTM	■ 2011 Net Cost per CYP		\$45

* CYPs based on new USAID conversion factors, except IUDs

** Target is 4 or more FP modern methods with at least one long-term method

ETHIOPIA

Map



ETHIOPIA HEALTH AREA PERFORMANCE

Current PSI Product & Service Health Areas	2012 YTD			% of Country Total Burden
	DALYs Averted	% Change from 2011 YTD	Burden Averted	
HIV & STD	5,330	-84%	0.2%	8.8%
Reproductive Health	3,787	19%	0.07%	15.6%
Malaria	16	-97%	0.0003%	4.9%
Diarrheal Diseases	18,994	130%	0.47%	10.9%
Potential 23% increase in relevance with expansion of existing PSI products and services				% of Country Total Burden
Tuberculosis				3.4%
Nutritional Deficiencies				5.1%
Respiratory Infections				14.6%

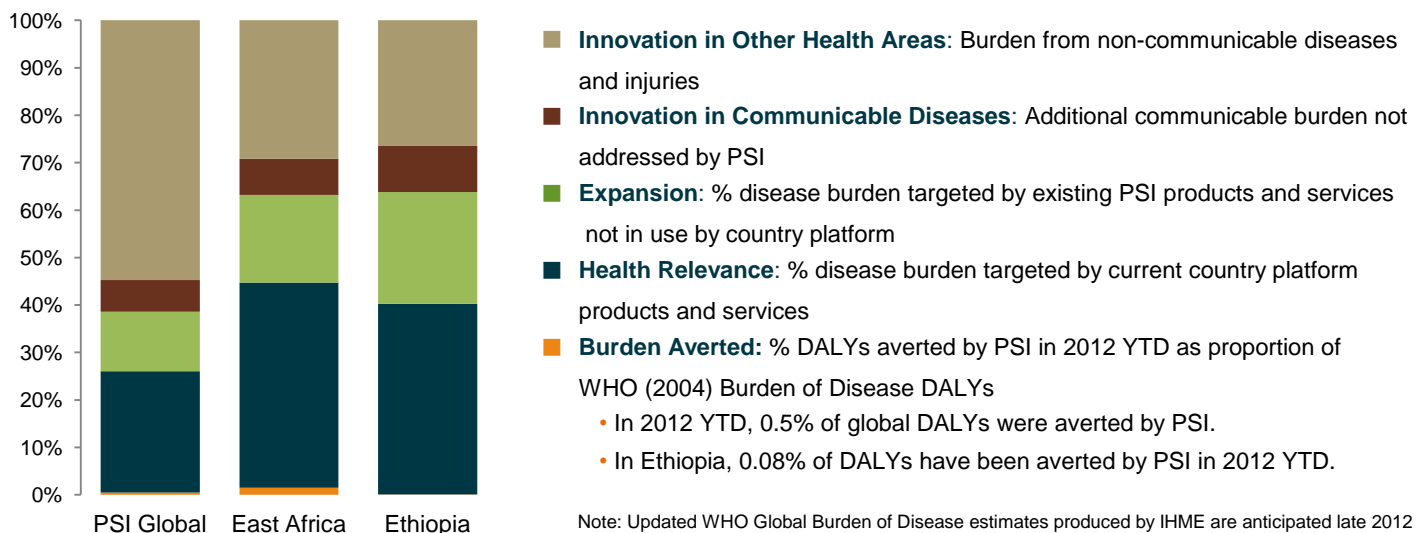
ETHIOPIA

Platform Profile

Population	82,949,541
Population under 5	11,931,668
Women aged 15-49	20,027,353
# Platform interventions	5
# Family planning interventions	1 with 0 LTM
Contraceptive prevalence	13.7% (2005)

* Population data from UN Population Division, 2010 revision

PSI RELEVANCE: 2012 DALYS AVERTED YTD COMPARED TO BURDEN OF DISEASE (WHO 2004)*



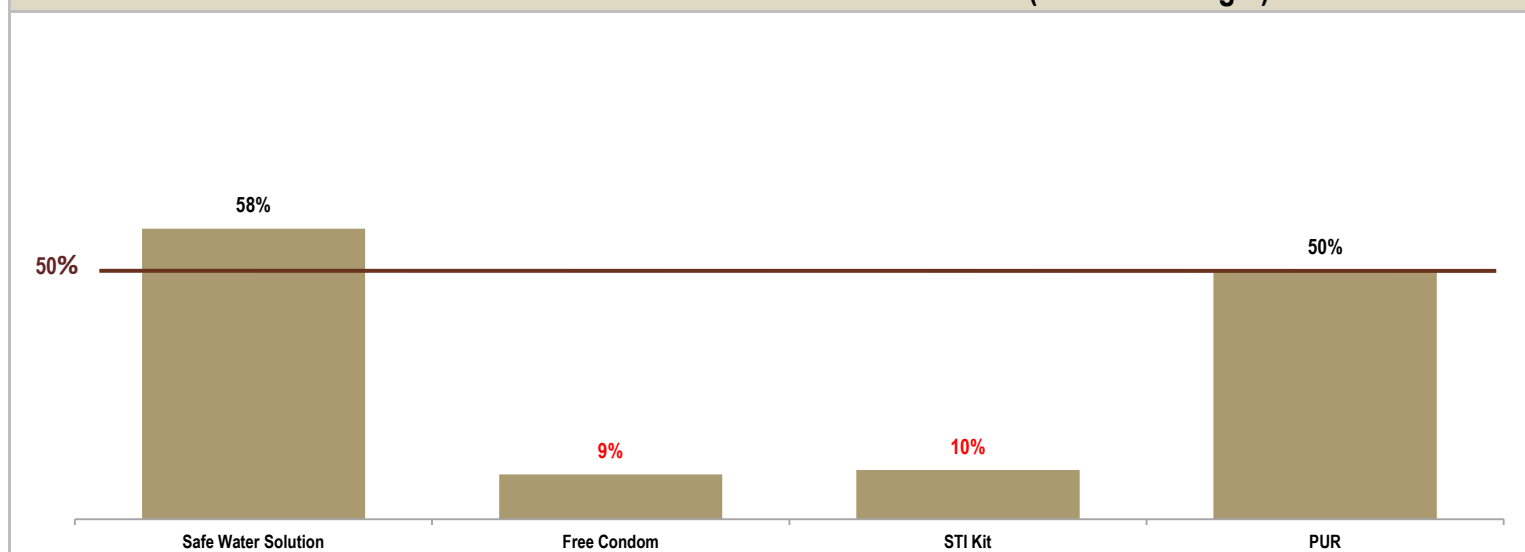
ETHIOPIA PRODUCTS & SERVICES DALYS AVERTED (from highest to lowest DALYs averted)

Products	2012 YTD DALYs	% Change from 2011 YTD	2012 YTD # Distributed	2012 Targeted Distribution	% of 2012 Target	2011 unit COGS	2012 YTD CYPs
Safe Water Solution	18,313	135%	1,224,907	2,100,000	58%	\$0.13	
Free Condom	8,271	19%	1,790,700	20,000,000	9%	\$0.03	14,923
STI Kit	846	-72%	17,717	180,000	10%	\$0.48	
PUR	681	48%	4,555,692	9,100,000	50%	\$0.04	
LLINs	16	-97%	64			\$5.44	
Total	28,127	-38%					14,923

* Product was not distributed in 2011 YTD

** DALYs averted and CYPs provided may be negative for products distributed in cases where PSI has distributed and inserted the same product. This is because DALYs averted and CYPs are calculated separately for products that are distributed and inserted; to avoid double counting, insertion DALYs and CYPs are subtracted from distribution.

PROGRESS TOWARD ETHIOPIA 2012 PROGRAM DISTRIBUTION TARGETS (% of 2012 Target)



* Targets are set by # of products distributed.