

Malawi Impact, Mid-Year 2012

Mid-year 2012, PSI has averted an estimated 715,796 DALYs in Malawi. This is 90% of their own program target for 2012.

MALAWI PROGRAM PERFORMANCE

	2012 YTD	% Change from 2011 YTD	% 2012 Program Target	2012 Program Target
SCALE				
■ DALYs Averted	715,796	51%	90%	796,921
■ Couple Years of Protection (CYP)*	66,139	114%	42%	158,083
■ Burden Averted	6.7%			

RELEVANCE

	VALUE		VALUE
■ Health Relevance	66%	■ 2011 Net Cost per DALY	\$17
■ Family Planning Method Mix**	3 with 0 LTM	■ 2011 Net Cost per CYP	\$81

* CYPs based on new USAID conversion factors, except IUDs

** Target is 4 or more FP modern methods with at least one long-term method

MALAWI

Map



MALAWI HEALTH AREA PERFORMANCE

Current PSI Product & Service Health Areas	2012 YTD			% of Country Total Burden
	DALYs Averted	% Change from 2011 YTD	Burden Averted	
HIV & STD	20,105	36%	1.0%	25.3%
Reproductive Health	15,285	111%	1.7%	11.6%
Malaria	409,513	11%	31.9%	8.2%
Diarrheal Diseases	15,206	0%	2.3%	8.9%
Respiratory Infections	255,687	275%	28.5%	11.9%
Potential 7% increase in relevance with expansion of existing PSI products and services				% of Country Total Burden
Tuberculosis				2.1%
Nutritional Deficiencies				4.6%

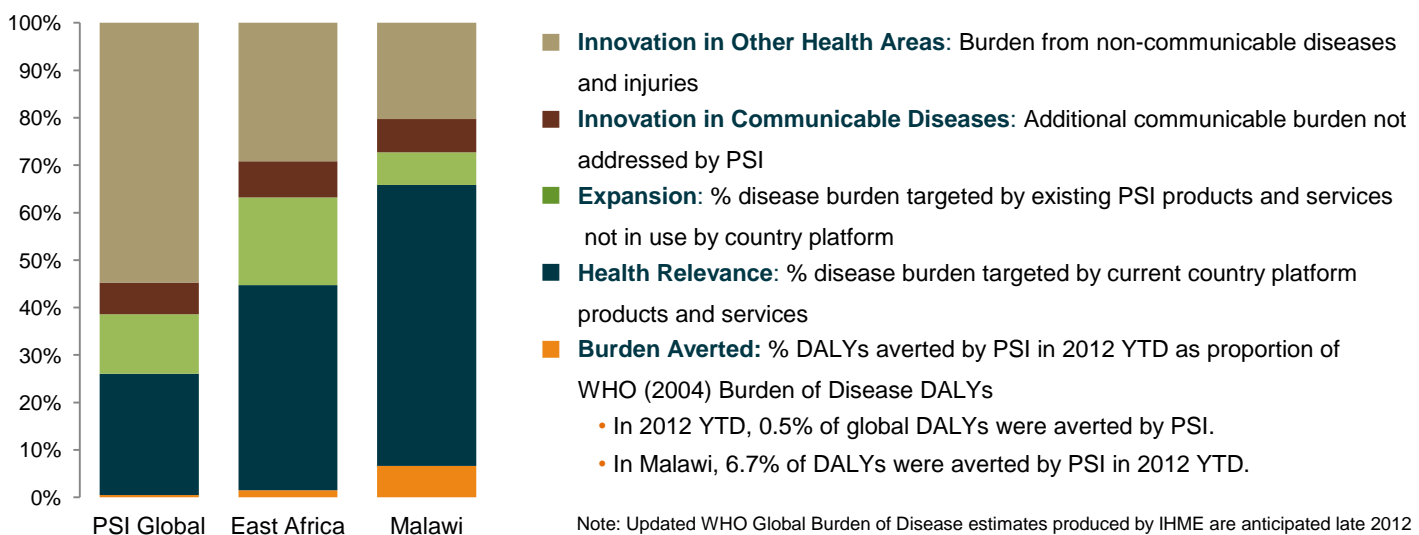
MALAWI

Platform Profile

Population	14,900,841
Population under 5	2,714,859
Women aged 15-49	3,310,476
# Platform interventions	11
# Family planning interventions	3 with 0 LTM
Contraceptive prevalence	38.4% (2006)

* Population data from UN Population Division, 2010 revision

PSI RELEVANCE: 2012 DALYS AVERTED YTD COMPARED TO BURDEN OF DISEASE (WHO 2004)*



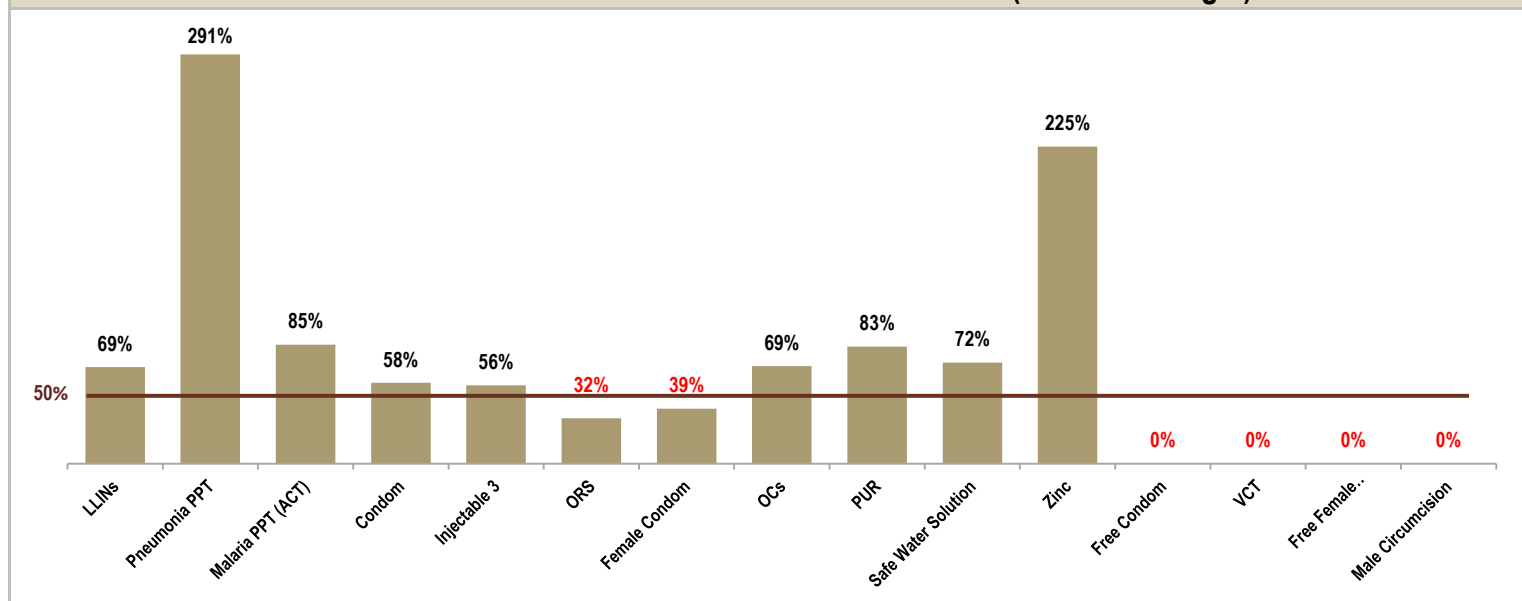
MALAWI PRODUCTS & SERVICES DALYS AVERTED (from highest to lowest DALYs averted)

Products	2012 YTD DALYs	% Change from 2011 YTD	2012 YTD # Distributed	2012 Targeted Distribution	% of 2012 Target	2011 unit COGS	2012 YTD CYPs
LLINs	322,112	38%	1,086,438	1,580,000	69%	\$4.20	
Pneumonia PPT	255,687	275%	1,233,600	424,080	291%	\$0.02	
Malaria PPT (ACT)	87,401	-28%	1,132,468	1,337,760	85%	\$0.02	
Condom	27,887	37%	4,025,297	7,000,000	58%	\$0.05	33,544
Injectable 3	6,895	499%	122,724	220,000	56%	\$1.07	30,681
ORS	5,291	-37%	326,478	1,008,896	32%	\$0.16	
Safe Water Solution	4,924	-10%	359,170	500,000	72%	\$0.07	
Zinc	4,307	339%	573,340	254,448	225%	\$0.04	
PUR	684	108%	4,990,172	6,000,000	83%	\$0.04	
OCs	376	80%	24,320	35,000	69%	\$0.37	1,621
Female Condom	232	-24%	35,159	90,000	39%	\$0.37	293
Free Condom	0	*	-	4,500,000	0%		
VCT	0	*	-	15,000	0%		
Free Female Condom	0	*	-	500,000	0%		
Male Circumcision	0	*	-	14,400	0%		
Total	715,796	51%					66,139

* Product was not distributed in YTD 2011

** DALYs averted and CYPs provided may be negative for products distributed in cases where PSI has distributed and inserted the same product. This is because DALYs averted and CYPs are calculated separately for products that are distributed and inserted; to avoid double counting, insertion DALYs and CYPs are subtracted from distribution.

PROGRESS TOWARD MALAWI 2012 PROGRAM DISTRIBUTION TARGETS (% of 2012 Target)



* Targets are set by # of products distributed.